

26. JULI 2021

Geniatech



Eyetv 4 Windows

Geniatech

EYETV 4 WINDOWS

USER MANUAL

Turn your Mac into the coolest TV in the house. Interrupt the program you're watching to grab a snack. Rewind to watch a scene in the movie again. Fast-forward to when the commercials start. Let the TV window hover over any other open windows so you can watch your favorite movie at the same time while surfing the web. Or watch two shows at once via picture-in-picture.

You can sit at your desk and navigate the resizable EyeTV window with your mouse. Or get comfortable on your sofa and navigate with an EyeTV or Apple remote in full screen mode. Through the luxurious EyeTV on-screen menu, you can easily zap through the program, browse the electronic program guide, as well as operate the EyeTV menu.

INTRODUCTION

EyeTV for Windows is a software application for viewing DVB TV and Radio programs on Microsoft Windows PCs. It is used together with live satellite servers using the SAT>IP protocol or BDA based drivers.

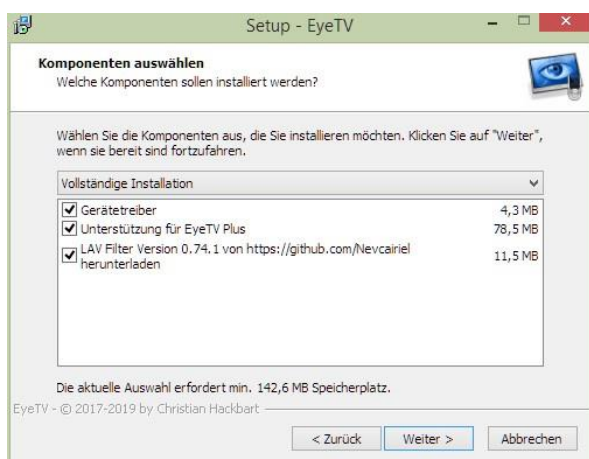
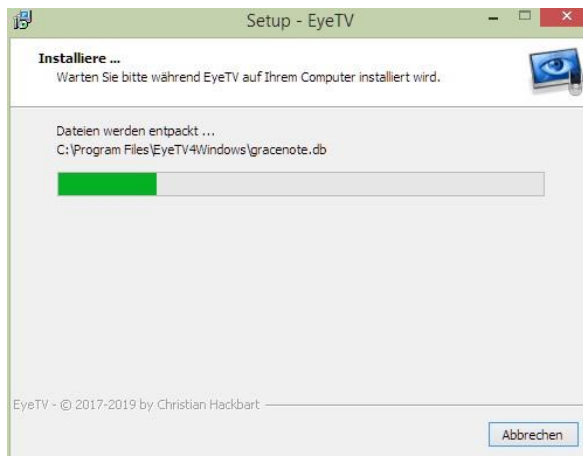
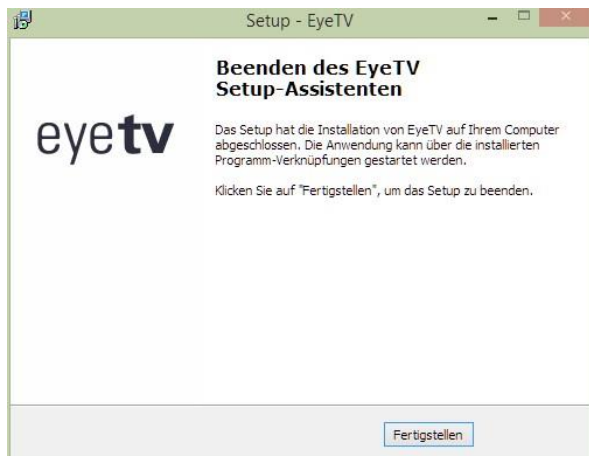
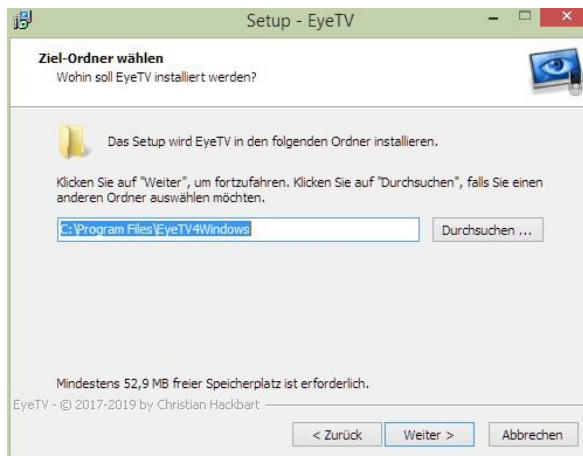
EyeTV for Windows provides access to live television and radio programs via a local IP network. It features a sophisticated Electronic Program Guide (EPG) and can be used to Timeshift and Record television and radio programs.

The EyeTV for Windows software is based on the Microsoft DirectShow Architecture for decoding audio and video programs. This means that the software application relies on external software components (so-called filters) for doing the actual decoding of television and radio programs. Depending on a PC's previous use these components may or may not be present on the target PC.

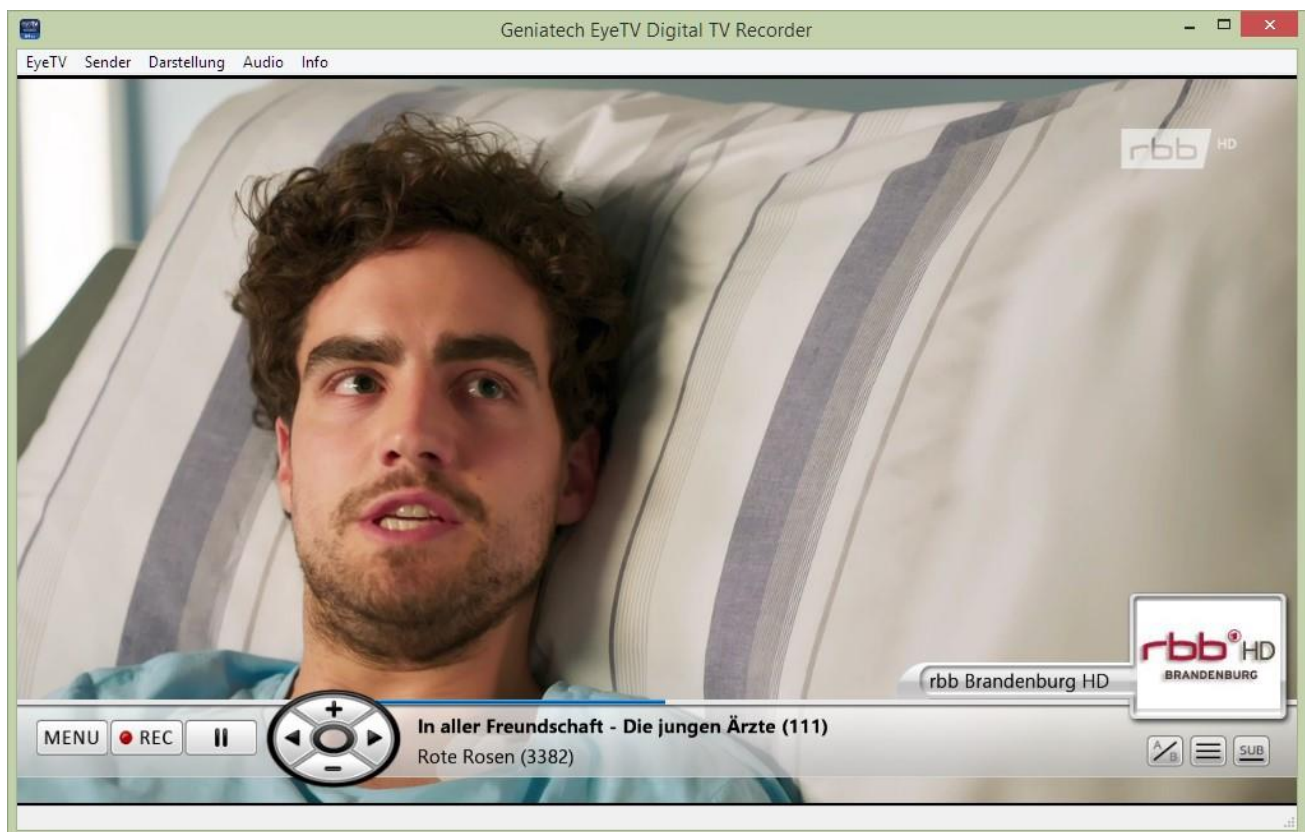
This manual contains instructions on how to detect that certain components/filters are missing and how to install these components if not present on the PC.

INSTALLATION

To install EyeTV for Windows on your PC, double-click the installer icon and follow the instructions of the installation wizard:



MAIN WINDOW



The main window gives direct button access to:

Timeshift: by pressing the Play/Pause button the current program is paused and can be resumed by pressing the same button again. To return to the live program, press the Stop button.

Recording: Instant recording of the currently displayed program can be started by pressing the Record button.

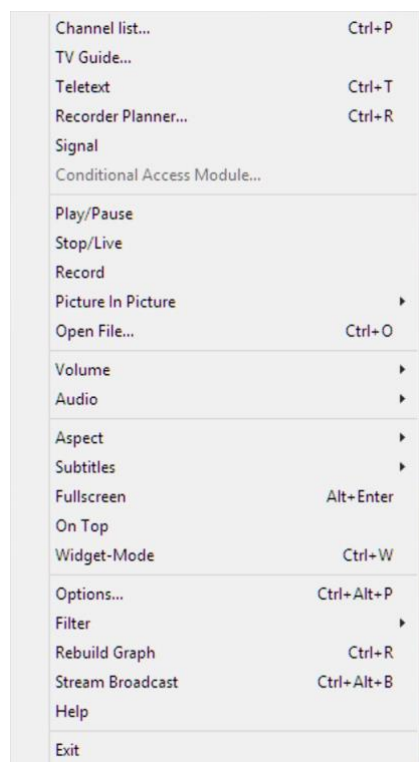
In addition there are direct access buttons for toggling between the last two channels, bringing up the OSD channel list and changing towards next and previous programs.

The interface also provides access to the volume and mute settings.

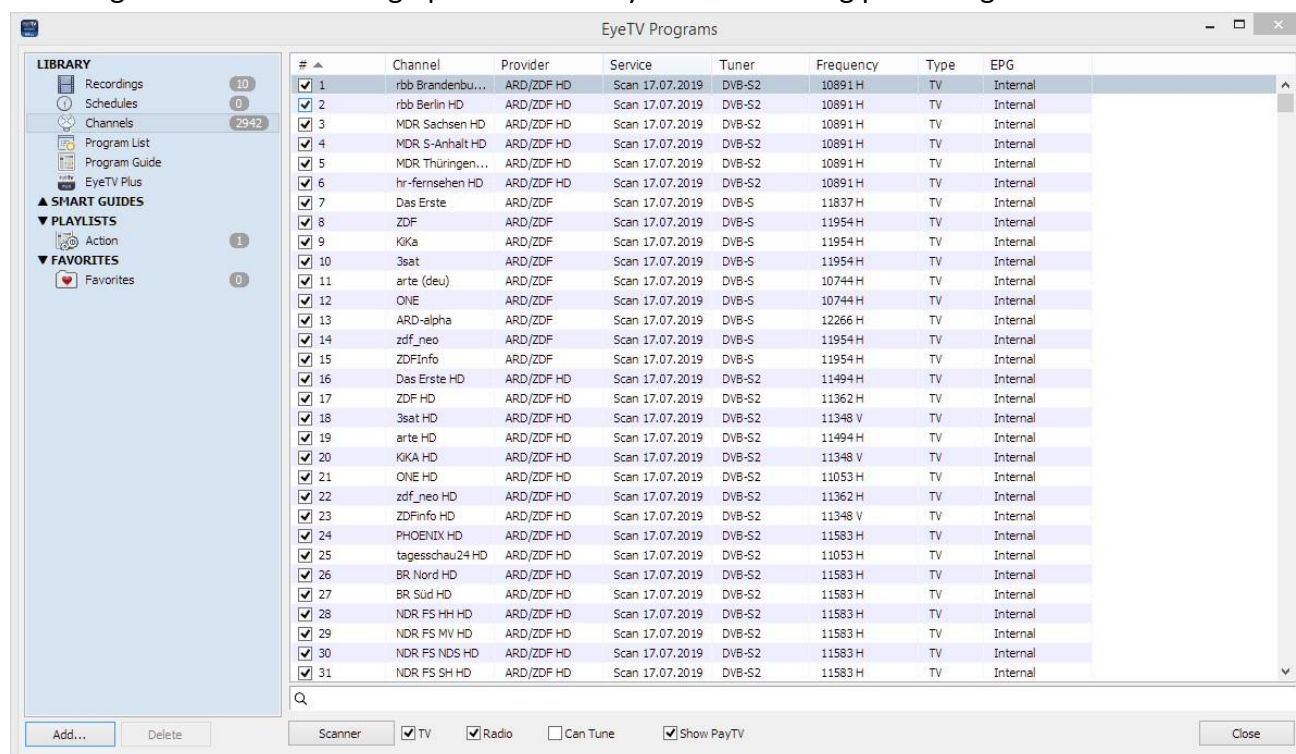
CONTEXT MENU

By right-clicking into the main video window, the user can bring up the following context menu which provides direct access to many of the EyeTV for Windows functions:

EYETV 4 WINDOWS



Selecting Channellist will bring up a Windows style Sidebar listing pre-configured channels.



ON SCREEN DISPLAY (OSD)

EyeTV for Windows features an OSD type menu which overlays itself on the Main Television Display.



This display is called up by pressing the “**M**” keyboard shortcut. It can be navigated with the keyboard arrows. The display can be removed by pressing “**M**” again or by hitting the “**Esc**” button.

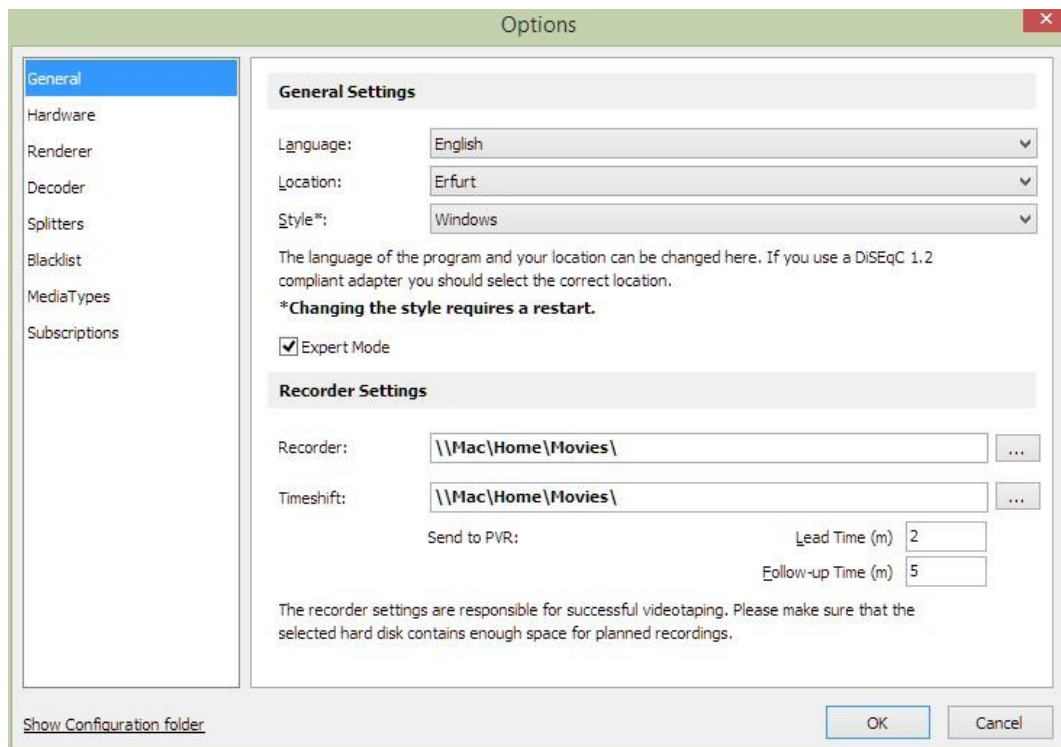
The OSD display provides direct access to the OSD Channellist, EPG, Recorded Files, Teletext and Language Settings. It also allows to pause the currently running program and launch an immediate recording.

WIDGET MODE

By pressing the “**Ctrl-W**” keyboard shortcut or by selecting “Widget Mode” from the main Context Menu, the EyeTV for Windows application chrome can be entirely removed. This reduces the display purely to the active video display and leaves a maximum desktop area for other applications running on the Microsoft Windows desktop.

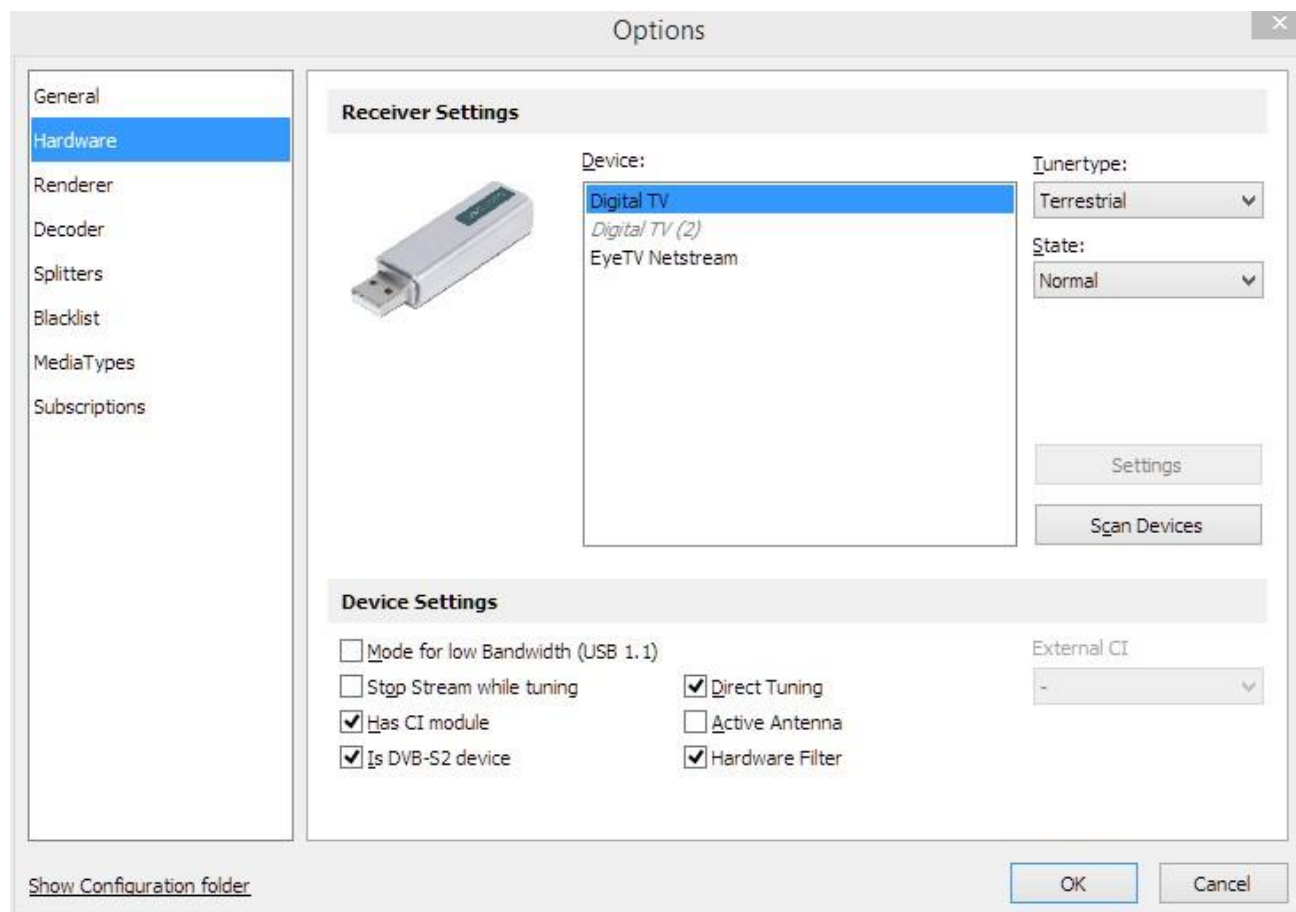
OPTIONS WINDOW

By clicking on Options in the main window menu or by selecting “Options” from the Context Menu the following window opens:

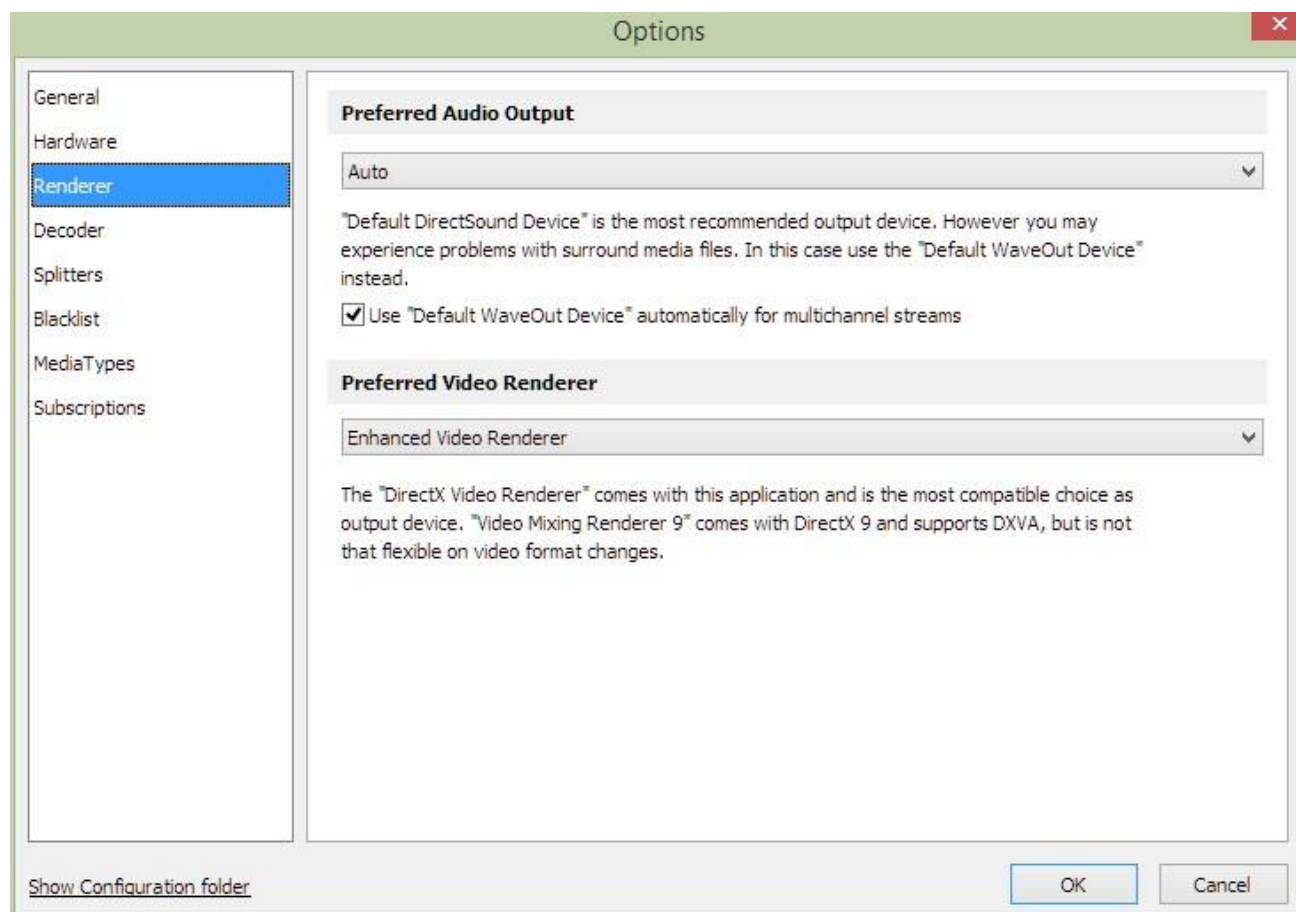


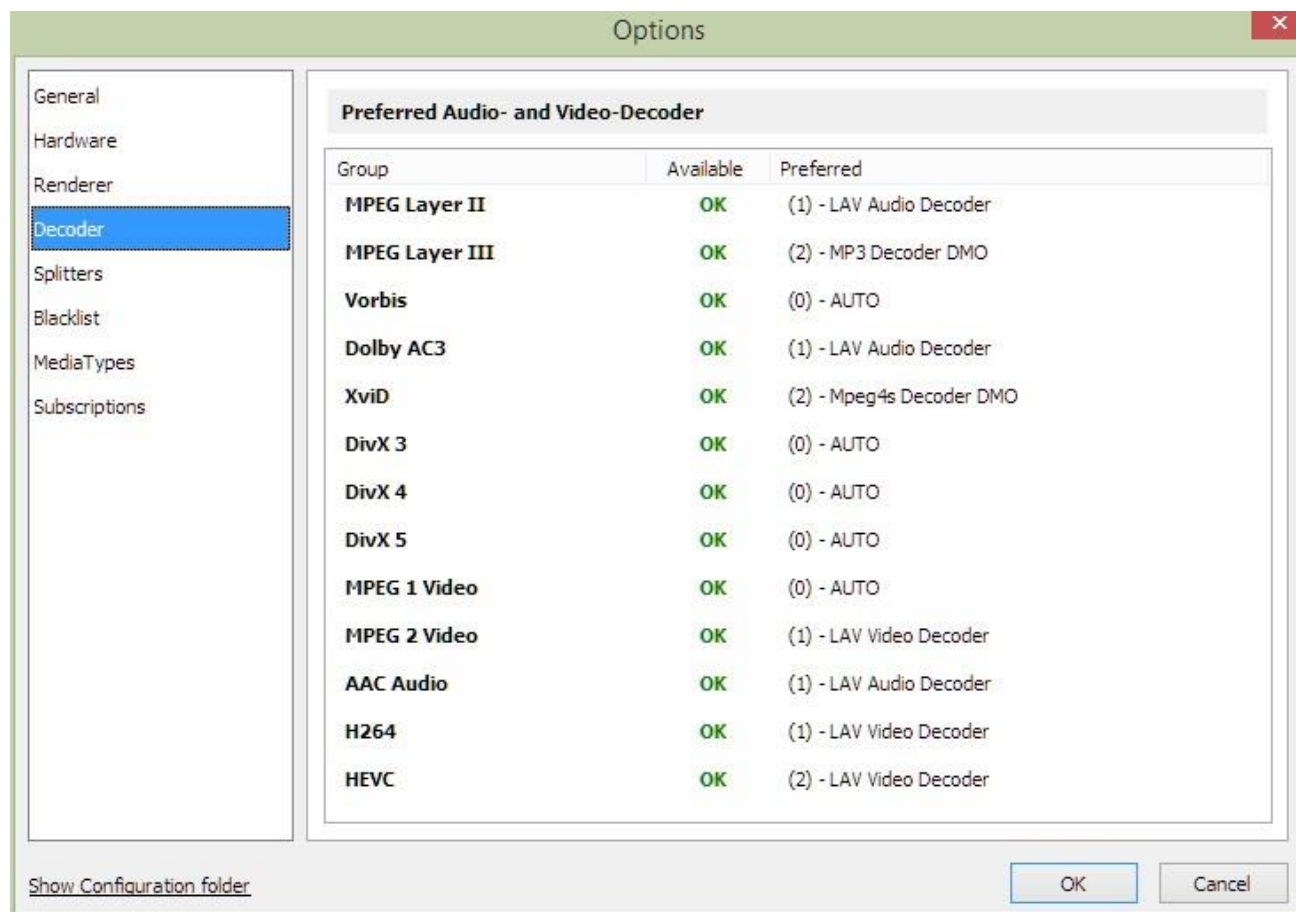
The General Tab has a section which allows selecting the Language of EyeTV for Windows. Your Location helps the application to find the proper settings for the channel scanner. A second section defining where the Recordings and Timeshift files will be located and how long the lead time and follow-up time for automated recordings should be used.

The second tab in this window is called Hardware and shows all the hardware that have been detected.

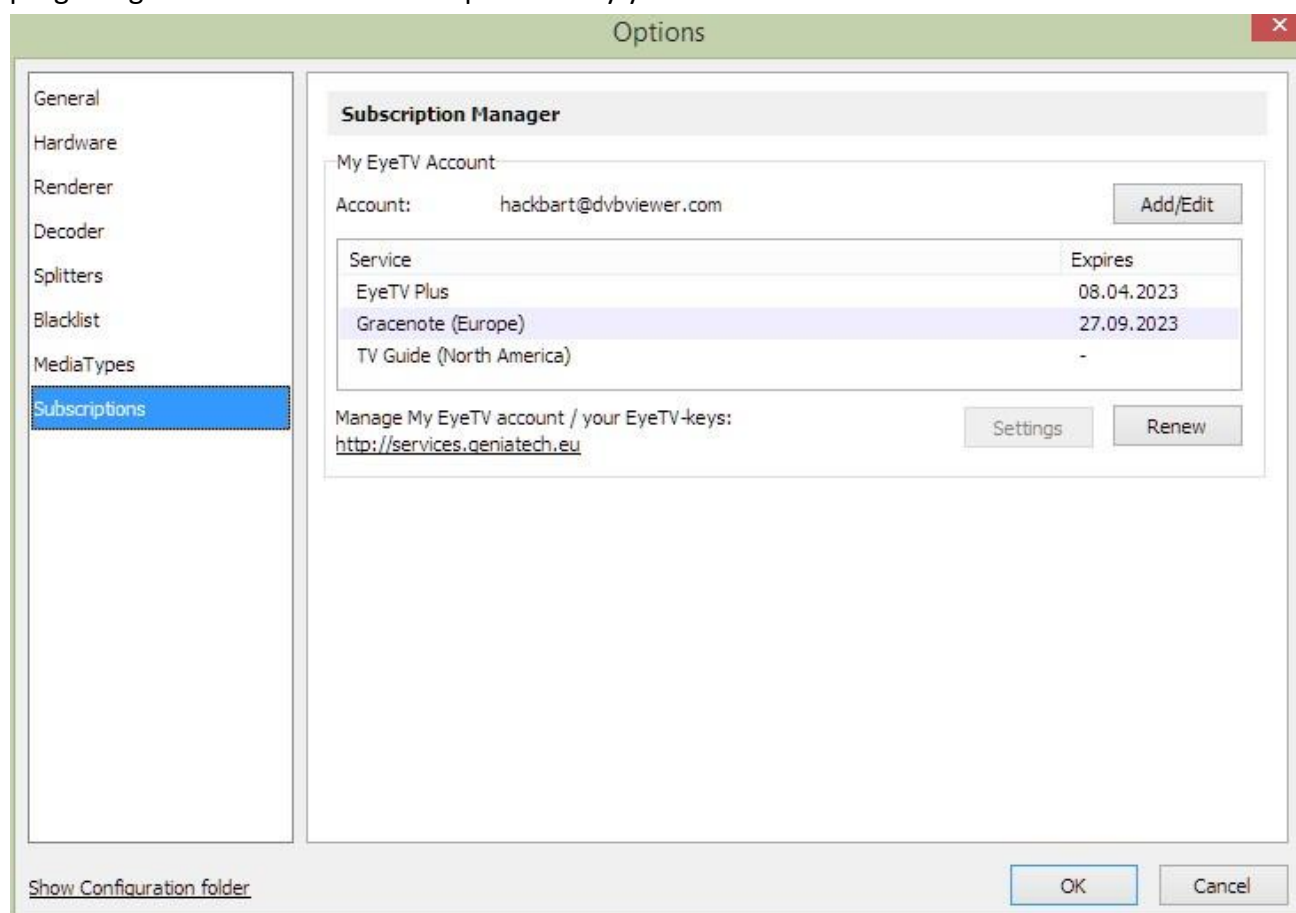


The Decoder Tab provides an overview of the filters (DirectShow software components) that are installed on the PC to decode the actual audio and video services received.





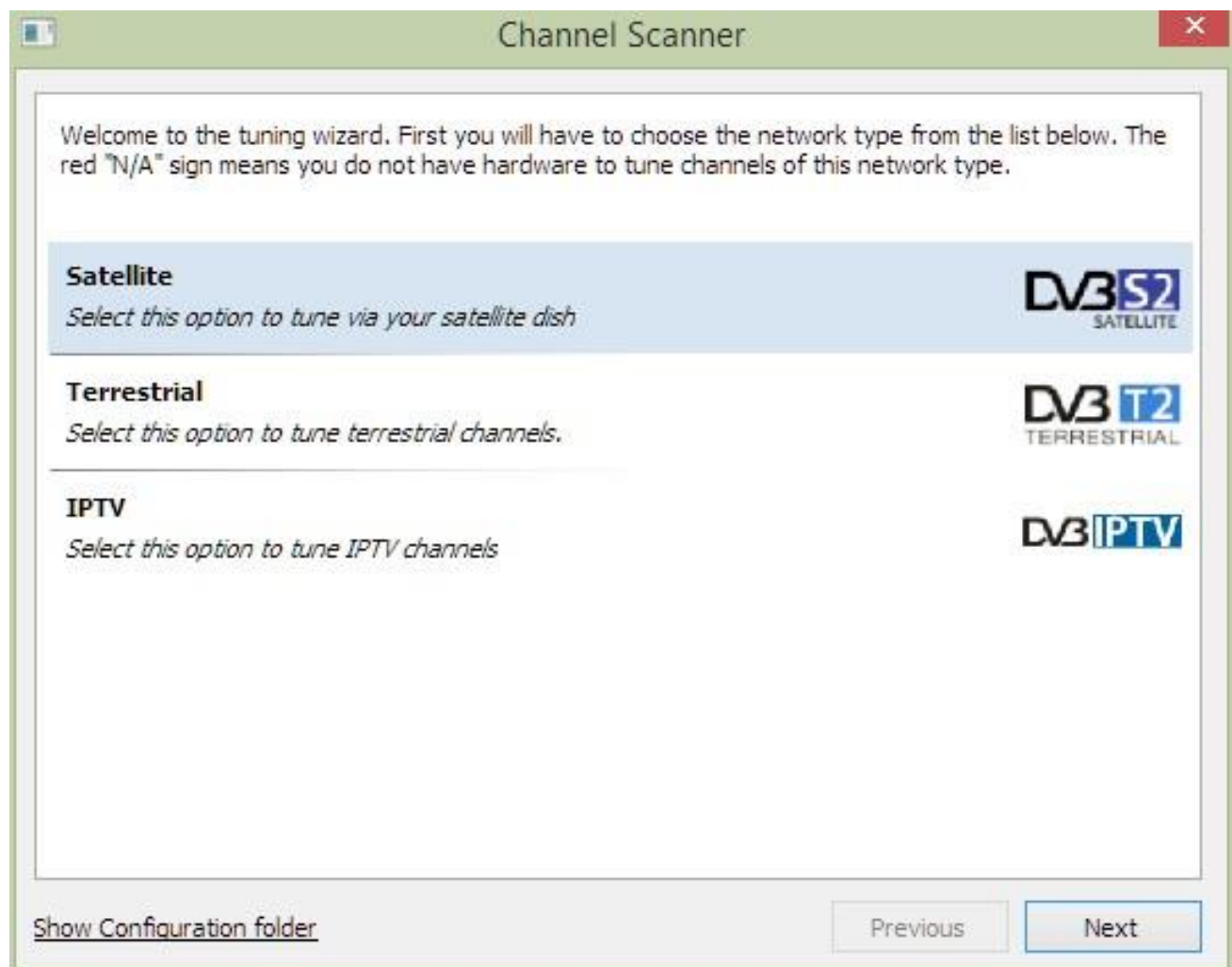
The final tab gives access your additional subscriptions. Subscriptions allow you to use external program guides instead of the one provided by your broadcaster.



SCANNER WINDOW

The Scanner window provides the possibility to update existing channel lists or add new ones to the EyeTV for Windows Configuration.

First you select the media type you want to add to your channel configuration. Only the device types that can also be received are displayed.



In the next step you can enter details which are required for the scanning process. This usually involves a preconfigured transponder list, start and end frequency for the station scan, and tuner-specific settings.

Now you have to decide the way of tuning channels. We recommend you to tune channels using our list of networks.

Root

Target Root:

Please select the network:

Transponder List:

Frequency (MHz):

End Frequency (MHz):

☒ Evaluate NIT

Tuner Input

DiseqC mode:

[Show Configuration folder](#)

After all the settings has been made and you pressed the next button, the application will search for available channels.

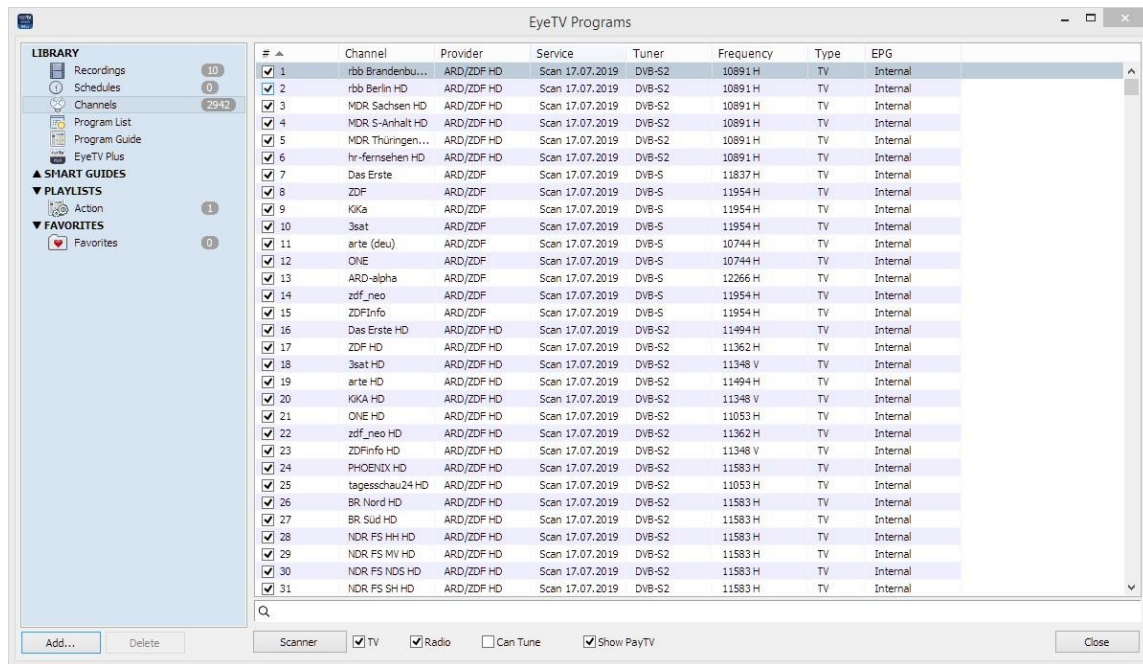
If channels are found, they are listed and can be added to the existing channel list by pressing the "Finish" button.

CHANNEL LIST

The channel list provides an overview of all the pre configured channels. This channel list can be updated or complemented with other satellite positions through the Scanner window.

The channel list is available in two versions. The first version is in a separate window.

EYETV 4 WINDOWS



The second version of the channel list is an OSD type display. It is brought up by pressing the “C” keyboard shortcut or by selecting it from the main OSD menu.



ELECTRONIC PROGRAM GUIDE

The Electronic Program Guide (EPG) provides detailed information on current and upcoming programs. The extent of this information varies from channel to channel and is sourced from the DVB broadcast information.

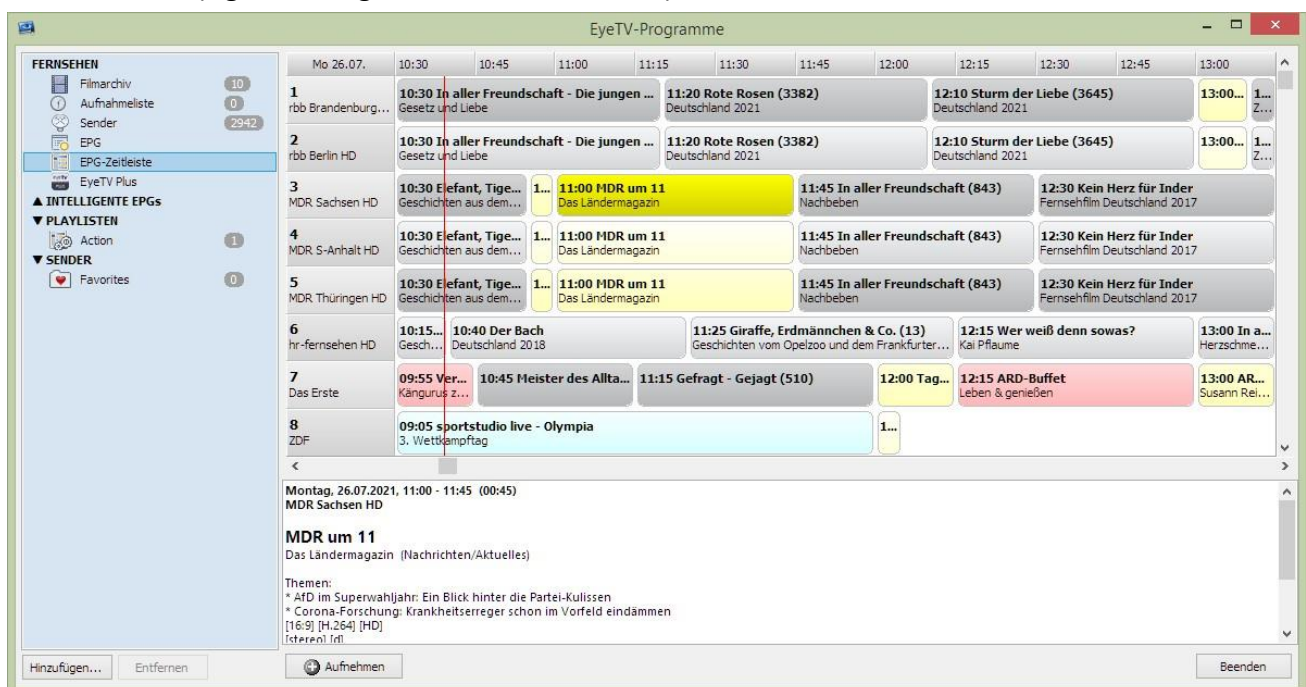
It's a breeze to search the EPG for the shows you're interested in using multiple, combined criteria and full text. For example, you can search for shows starring your favorite actors or for your favorite directors, themes and genres. Then simply save this search as an Intelligent Series EPG.

Are you interested in a specific TV series? In a single step, you can create a very special Smart EPG, a Smart Series EPG, allowing you to find and record all episodes of a series. Repetitions can be easily filtered out, so that only what you really haven't seen yet is recorded.

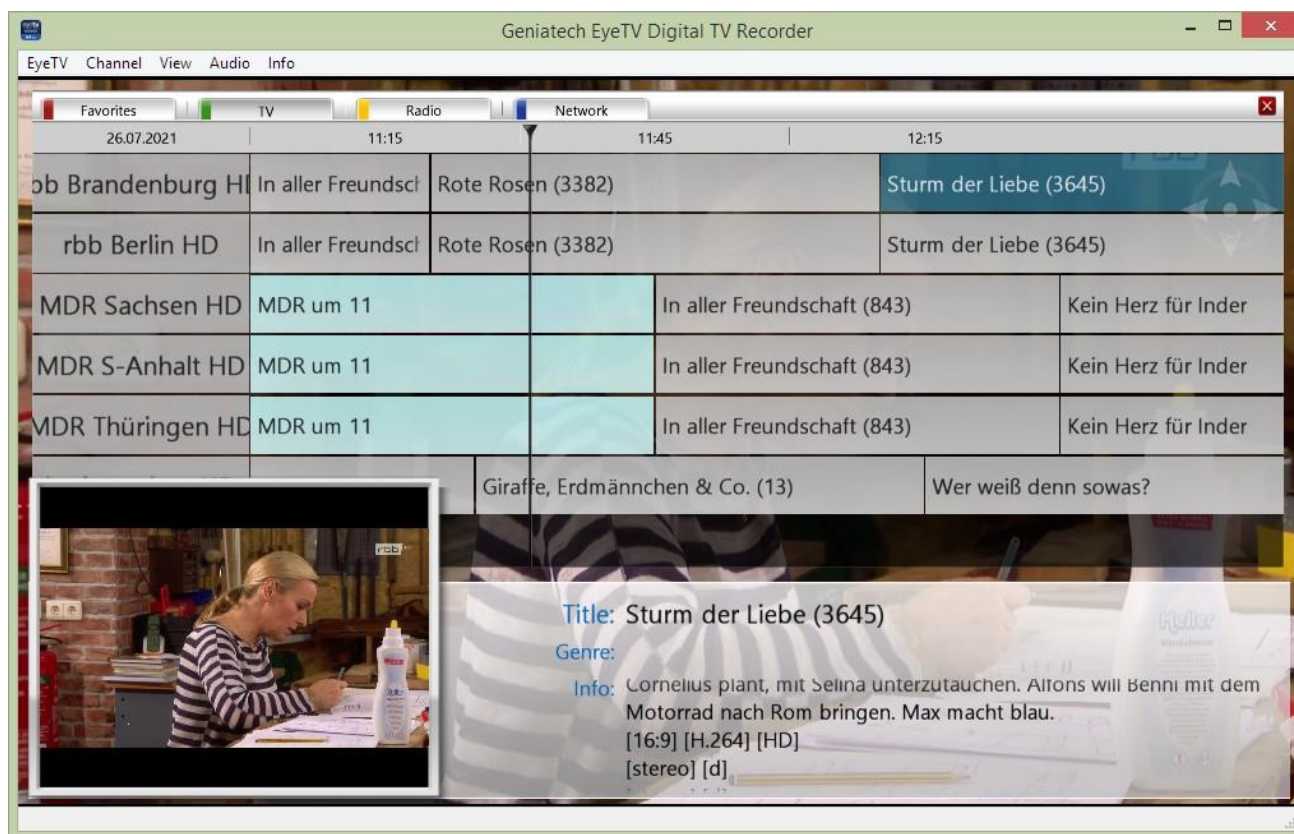
Smart EPGs and Smart Series EPGs update automatically, adding shows to your saved search as they appear in the EPG. Please note: The Smart Series EPG feature requires a Gracenote subscription.

The EyeTV for Windows software features two different views for the EPG.

The first is a classical Windows style view and can be accessed by selecting “TV Guide” from the context Menu (right-clicking into the main window).



The second view is an OSD (On Screen Display) which can be brought into view by pressing the “E” button on the keyboard and by selecting EPG from the menu bar at the top of the main window. The EPG can be navigated with the keyboard cursors.



RECORDING

The show you're watching is worth recording, right? No problem. Just click on the instant recording button.

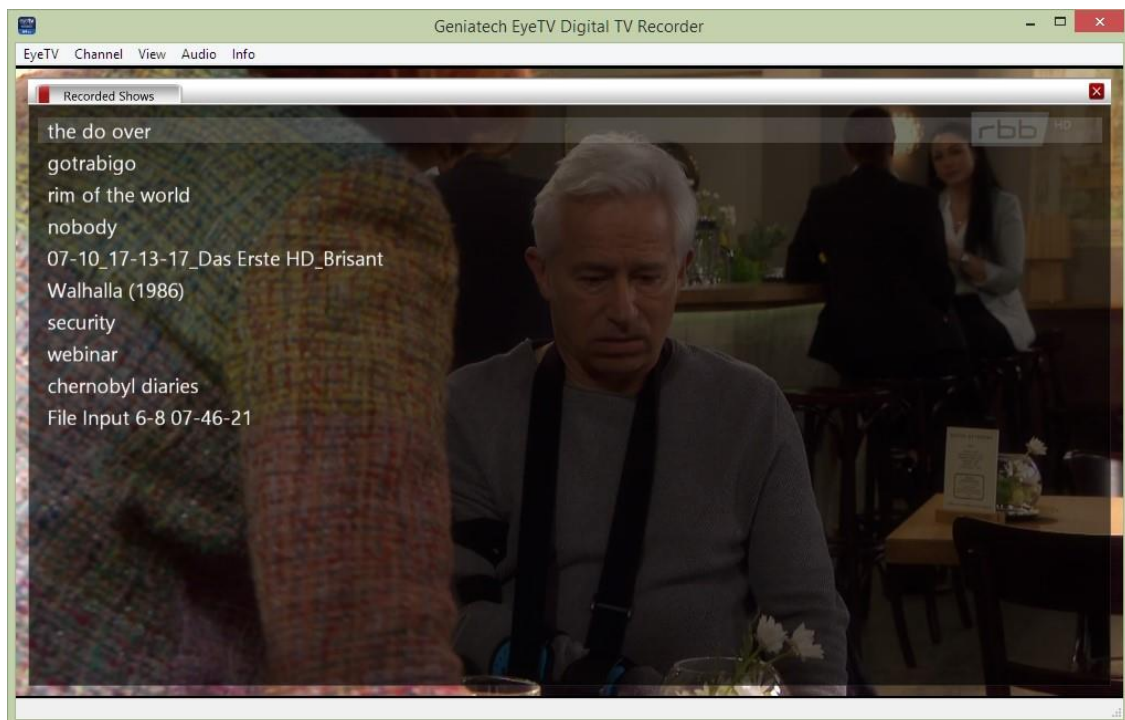
While recording, you can still pause, fast forward or rewind the live program.

If you want to schedule a recording, simply use the automatic recording function via the EPG. EyeTV even "wakes up" the PC in time for recording.

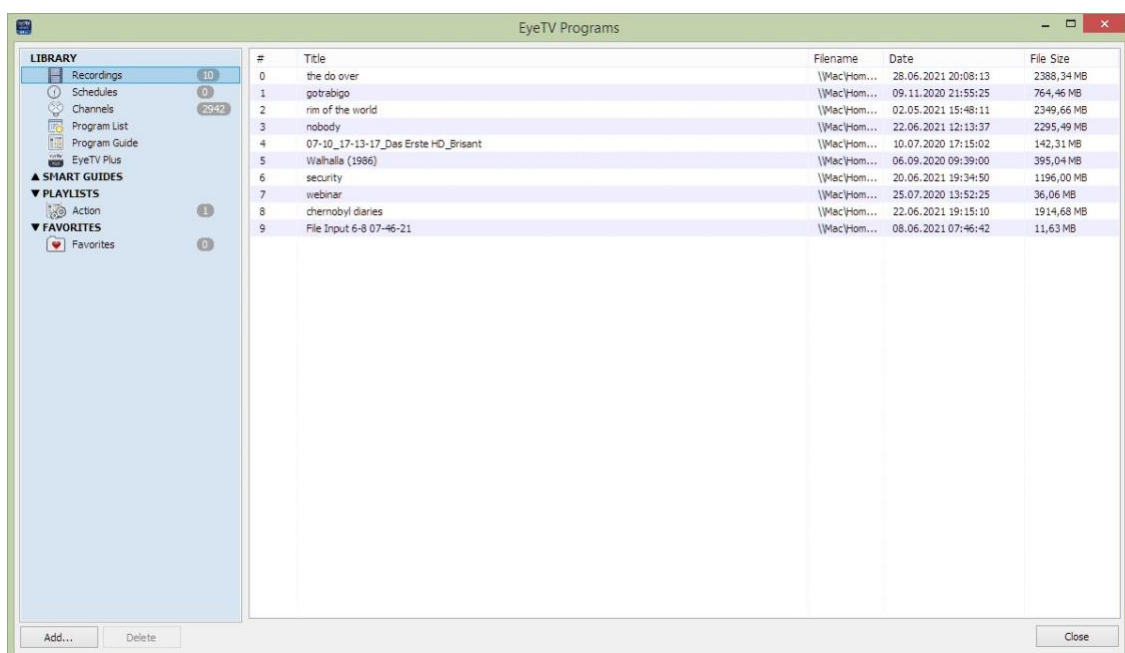
With just one click, you can record your saved searches. Simply check the appropriate box within your Intelligent EPG.

RECORDED ASSETS

Recorded Assets can be played back directly by pressing the "R" keyboard shortcut and selecting the corresponding item.



Alternatively you can also find your recordings in the recordings window.



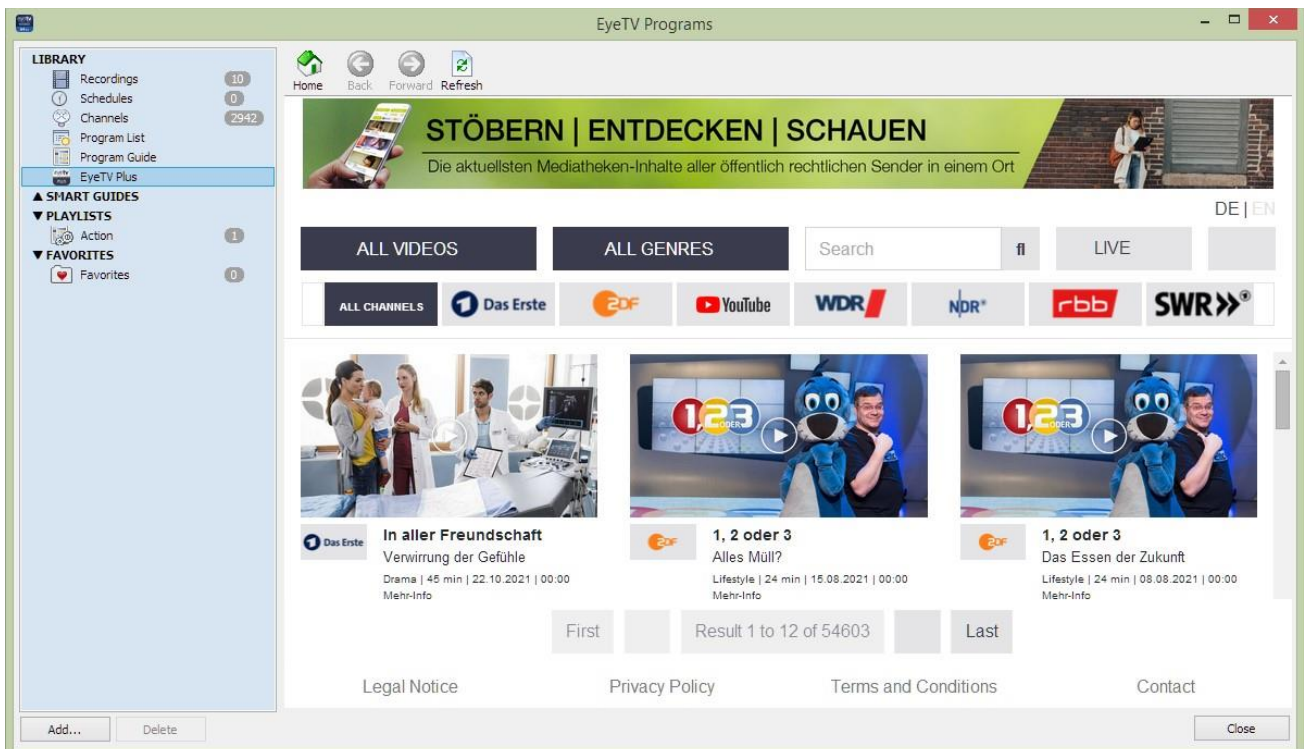
TELETEXT

By clicking on the Teletext Entry in the Menu Bar or by pressing the letter “T” on the keyboard a teletext display opens if the corresponding channel provides a teletext service.

EYETV 4 WINDOWS



In addition to classic teletext, you also have the option of accessing a modern multimedia database. In this database, you will find a clear overview of many programs that were broadcast in the last 14 days.



KEYBOARD SHORTCUTS

- C: Channellist (OSD)
- E: EPG Electronic Program Guide (OSD)
- O: Options
- M: Menu (OSD)
- V: VCR Video Recorder Programming
- R: Recorded Shows (OSD)
- T: Teletext (OSD)
- L: Audio and Subtitle Selection (OSD)
- ESC: clear
- F5: Favorites (Red)

F6: TV (Green)

F7: Radio (Yellow)

0..9: Numbers

Cursors: Menu Navigation

Alt+Enter: Fullscreen

Ctrl+W: Widget Mode Page

Up: Channel +

Page Down: Channel -

Ctrl+M: Mute

Ctrl+R: Rebuild Graph

TROUBLESHOOTING

1.) SAT>IP server is not detected

Go to Options / SAT>IP and check that a SAT>IP server is correctly detected. If not:

Make sure that the SAT>IP server is switched on.

Make sure that the SAT>IP server and EyeTV for Windows are connected to the same network.

Verify that a Firewall on the PC does not block access to the local LAN especially for multicast traffic.

2.) No live video is visible

If after installing the EyeTV for Windows on your PC, the following display appears instead of a decoded video picture, it is very likely that the PC is missing the required video decoding filter(s). Switch between SD and HD channels to check whether there is a difference between MPEG-2 (SD) and MPEG-4 AVC (HD) channels.

As said above, the EyeTV for Windows software application relies on the Microsoft DirectShow architecture for decoding and displaying video and audio. This means that in addition to the application itself a number of software components, called filters need to be present on the PC as well. These filters do the actual decoding of audio and video and are shared between applications on the Microsoft Windows PC. Whether these filters are present or not depends on previous installations done on the target PC.

3) USB or PCI adapters are not found

For your USB or PCI adapters you need a working driver in order to get the devices working with your computer. Usually these drivers can be found on a CD which might be part of your hardware or via internet on the manufacturers web site. Please make sure that these drivers are installed properly and the windows device manager does not mark with a red or yellow icon.